



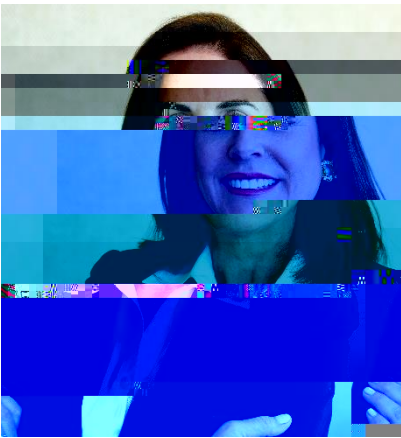
## The McDermond Center Speaker Series

### Darnall Alumni Fellow

Monday, April 12<sup>th</sup>, 2021

4:00 PM - 5:00 PM

Zoom



#### Jan Risi '81

*President & CEO*

*Independent Purchasing Cooperative, Inc.*

With more than 34 years of Agri-Business experience, Janet Risi is a respected leader in the supply chain management industry. Currently, she serves as the President and CEO of Independent Purchasing Cooperative (IPC), a supply chain management company she founded in 1996 to supply goods and services in North America to Subway® Restaurants.

At the time of IPC's founding, Subway® consisted of 7,000 restaurants and Risi served on the Subway® Strategic Planning Council, under the direction of which the brand grew to nearly 42,000 units worldwide. Since its inception, IPC and has successfully secured more than \$2 billion in savings for North American Franchise Owners while simultaneously increasing quality and food safety standards.

IPC's industry-leading efforts have earned it recognition and awards from organizations such as The National Restaurant Foundation and Foodservice Technology Leader, as well as numerous visionary awards for category management leadership. Risi herself has also garnered accolades for her leadership, most recently named an Industry Titan by the Women's Foodservice Forum and selected to the Nation's Restaurant News Top 50 Power List in foodservice.

Prior to founding IPC, Risi began her career St. Louis, MO in 1981 working as a commodities buyer for the Ralston Purina Company before stops at Jack in the Box, Chef America, Inno-Pacific Group and Burger King where she polished her experience in all aspects of the food manufacturing, operations, sourcing, distribution, marketing, and logistics. Risi believes her biggest accomplishment is in putting together a leadership team that is inspired to drive continuous improvement and challenge the status quo- resulting in industry changing programs that enhance food safety and quality.

Risi graduated from DePauw University in 1981 with a major in English and a minor in Business. In addition to her career, Risi serves on the Board of Directors for Coral Gables Trust Company, The Florida House, PURE Bioscience and the James Beard Foundation Board of Trustees. Her charity work includes The Sylvester Comprehensive Cancer Research Center, Fairchild Tropical Botanic Garden, DePauw University, Best Buddies, Wounded Warrior Project, and Charity Vision.